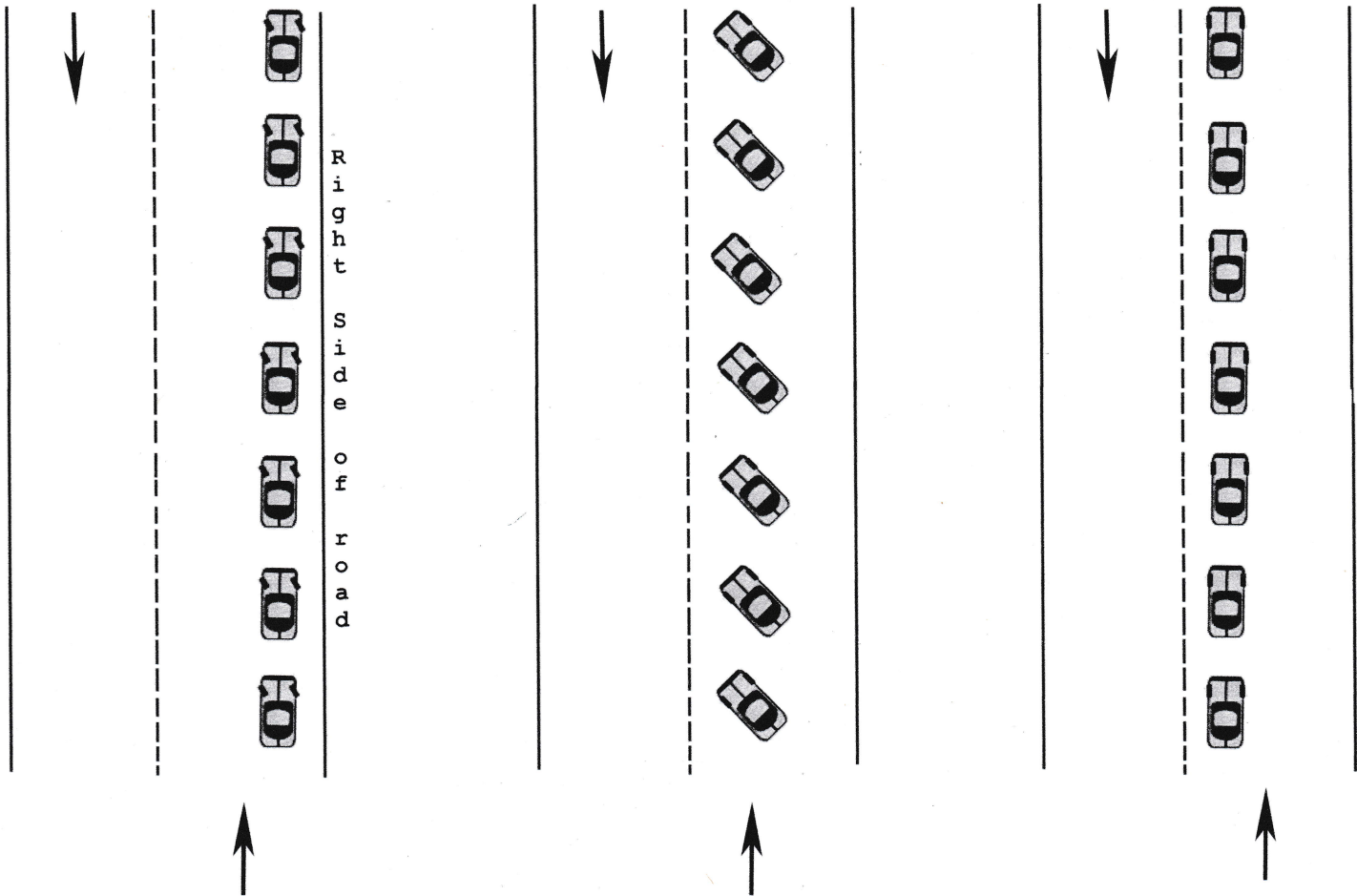


Stop with
wheels turned
to the left

Pull out
as a group

Accelerate
as a group



When stopping to regroup, leave space between you and the car in front of you and have your wheels turned to the left. When the signal to move is given on the CB, or when you see the lead car move, enter the roadway as a group. Caution: Watch for traffic and do not accelerate so fast that you kick up stones or debris.